

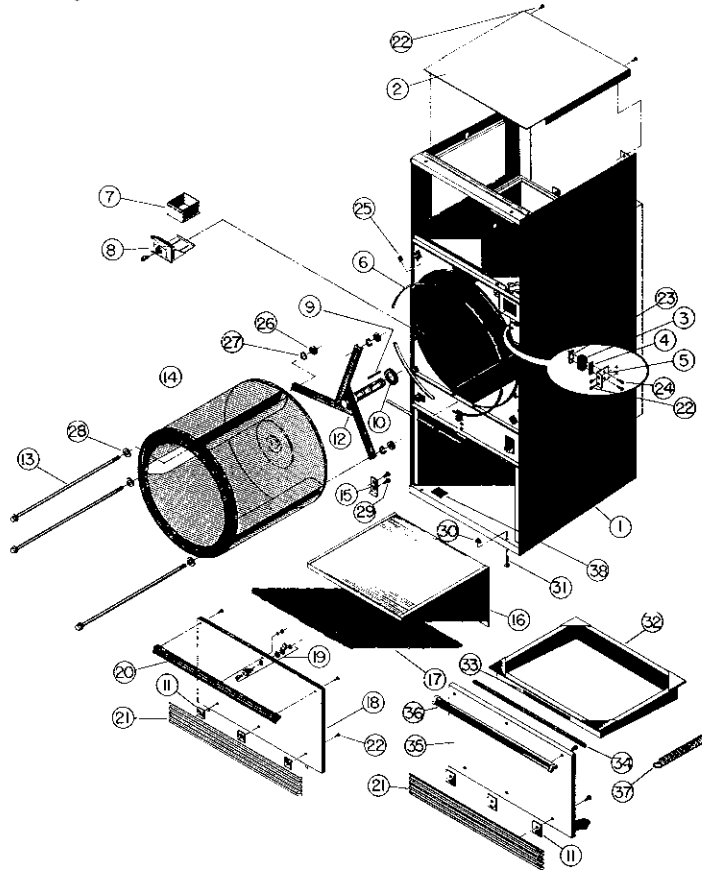
W. M. CISSELL MANUFACTURING COMPANY

831 S. FIRST STREET • P. O. BOX 1143, LOUISVILLE, KY., U.S.A. 40201

Foreign Distributors: Address Correspondence Attention
Export Department • Cable Code "CISSELL"
Pacific Coast Office, 4823 W. Jefferson Blvd., Los Angeles

Ask Your Distributor

CISSELL
28BS30 DRYER
FRONT VIEW

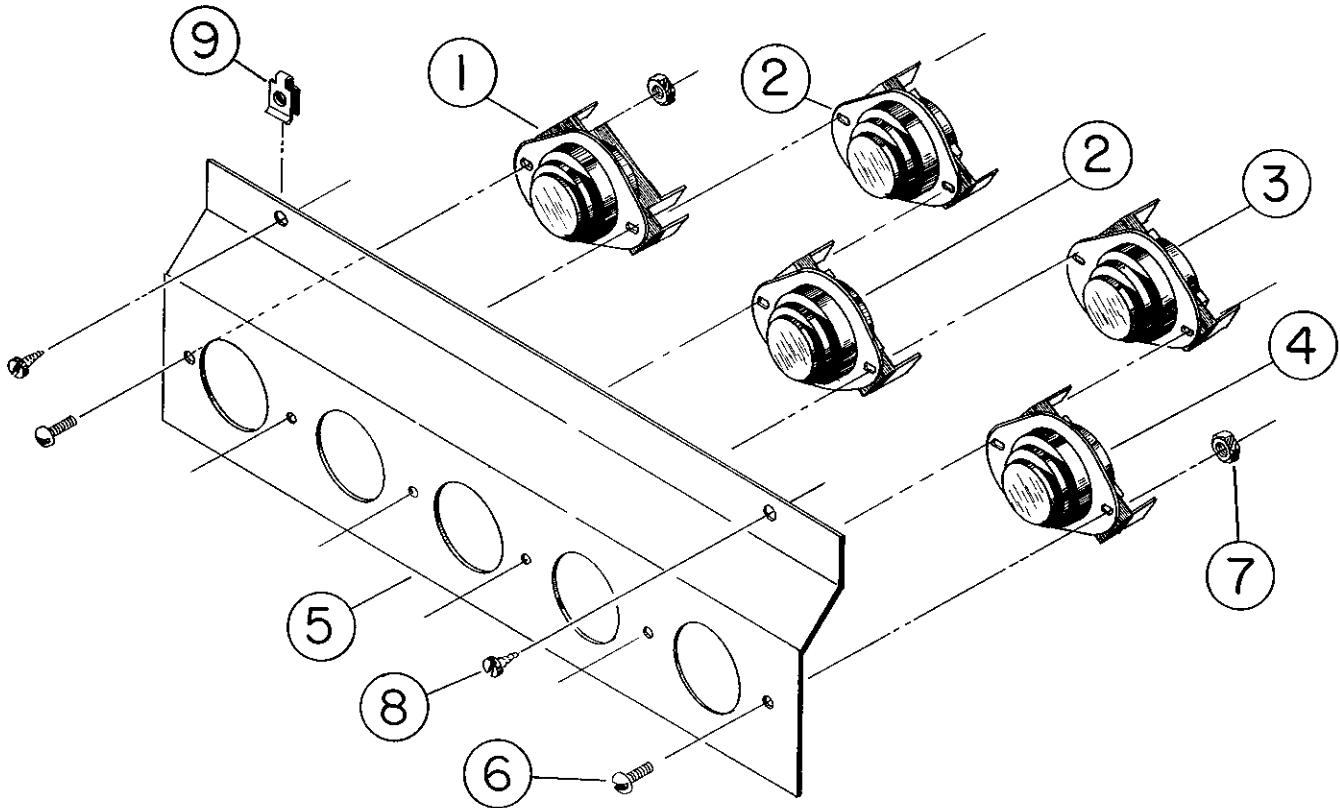


ALL HARDWARE SOLD ONLY IN PACKAGES OF 6

Ref. No.	Part No.	Description	Ref. No.	Part No.	Description
1	TU5208	Jacket Welded Assy.	20	TU5222	Lint Door Hand w/hardware
2	TU2620	Solid Top (Gas Dryer)	21	TU2384	Bottom Trim
	TU6129	Solid Top (Electric Heated Dryer)	22	M263	#8-3/8" Sheet Metal Screw
3	TU1979	Door Switch	23	TU1771	#6 Tinnerman Twin Nut
4	TU1770	Insulator	24	TU3219	#6 x 1" Sheet Metal Screw
5	TU2373	Door Switch Bracket	25	TU2877	#10 Speed Nut
6	TU2483	Sweep Sheet Gaskets	26	TU2882	1/2"-20 Hex Head Nut
7	CM35	Coin Box	27	TU2831	1/2" Split Lock Washer
8	CM61	Coin Vault W/Lock & Key	28	TU2883	1/2" Cut Washer
9	TU3167	Key	29	TU1978	#14 x 3/4" Lg. Sheet Metal Screw
10	TU108	Felt Seal	30	TU4937	3/8"-16 Jam Nut
11	TU2710	Trim Holder	31	TU3211	3/8"-16 x 2 1/2" Leveling Bolt
12	TU5103	Spider Welded Ass'y.	32	TU2109	Lint Drawer
	TU7182	Spider Welded Ass'y.	33	TU1893	Lint Drawer Name Tag
13	TU2313	Tie Rod	34	TU2853	Lint Drawer Seal
14	TU2083	Basket Weldment	35	TU4819	Lint Drawer Door
15	TU3205	Lock Plate	36	TU2401	Lint Door Handle
16	TU6439	Lint Screen Housing	37	CB19	Extension Spring
17	TU5261	#Self-Cleaning Lint Screen Ass'y.	38	TU6418	Clearance Nameplate
18	TU5277	Lint Drawer Door		*TU6956	Screen Only
19	TUB1867	Lock & Key (JWC-2)		*TU5225	Frame Only

W. M. CISSELL MANUFACTURING COMPANY

831 S. FIRST STREET • P. O. BOX 1143, LOUISVILLE, KY., U.S.A. 40201

Foreign Distributors: Address Correspondence Attention
Export Department • Cable Code "CISSELL"
Pacific Coast Office, 4823 W. Jefferson Blvd., Los Angeles*Ask Your Distributor***CISSELL
LAUNDRY DRYER
THERMOSTAT ASS'Y.
TU5408**

ALL HARDWARE SOLD IN PACKAGES OF 6

<u>Ref. No.</u>	<u>Part No.</u>	<u>Description</u>
1	TU2045	Thermostat (Cool-Down)
2	TU3240	185° Thermostat (Safety & High)
3	TU5149	165° Thermostat (Medium)
4	TU5150	150° Thermostat (Low)
5	TU5143	Mounting Bracket
6	TU3624	#6-32 x 1/4" Round Head Machine Screw (6 req'd)
7	TU3400	#6-32 Hex Nut (6 req'd.)
8	M263	#8 x 3/8" S.M.S. 2 Req'd.
9	TU6067	#8 Tinnerman Clip (2 Req'd.)

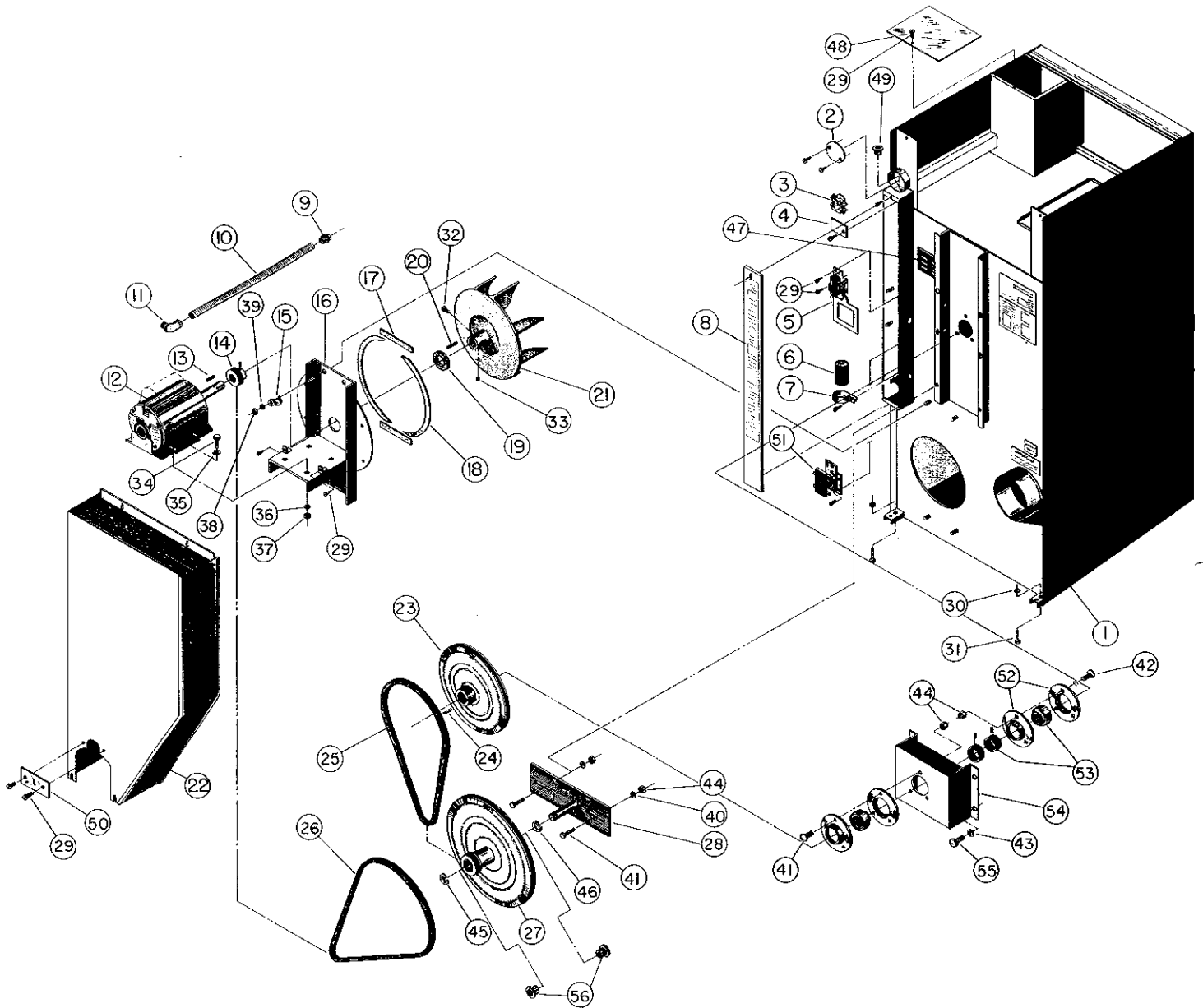
W. M. CISSELL MANUFACTURING COMPANY

831 S. FIRST STREET • P. O. BOX 1143, LOUISVILLE, KY., U.S.A. 40201

Foreign Distributors: Address Correspondence Attention
Export Department • Cable Code "CISSELL"
Pacific Coast Office, 4823 W. Jefferson Blvd., Los Angeles

Ask Your Distributor

**CISSELL
28BS30 DRYER
REAR VIEW**



ALL HARDWARE SOLD ONLY IN PACKAGES OF 6

<u>Ref. No.</u>	<u>Part No.</u>	<u>Description</u>	<u>Ref. No.</u>	<u>Part No.</u>	<u>Description</u>
1	TU5208	Jacket Welded Ass'y.	32	F819	5/16"-18 x 5/8" Square Head Set Screw
2	TU2335	Electrical Box Cover	33	TU3282	5/16"-18 x 3/8" Nylok Set Screw
3	M155	Wire Harness Clamp	34	TU5439	5/16"-18 x 3/4" Hex Head Screw
4	TU2726	Strain Relief Plate	35	VSB130	5/16" Cut Washer
5	TU2423	See Page <u>19</u>	36	TU2814	5/16" Split Lock Washer
6	TU3481	Capacitor (Optional)	37	C249	5/16"-18 Hex Nut
7	TU5135	Capacitor Strap (Optional)	38	TU4787	3/8"-16 Hex Nut
8	TU5890	Control Box Cover	39	VSB134	3/8" Lock Washer
9	TU4790	Straight Connector	40	TU1851	1/2" Cut Washer
10	5046-41-292	Greenfield Cable (Specify 22" Lg.)	41	TU4936	3/8"-16 x 3/4" Carriage Bolt
11	TU4791	Right Angle Connector	42	TU7178	3/8"-16 x 3/4" Rib Neck Bolt
12		See Motor List Page <u>6</u>	43	IB140	3/8" Cut Washer (4 Req'd)
13	TU5241	Key	44	TU3188	3/8"-16 Hex Nut (Nylok)
14	TU5218	Motor Sheave 60 Cy.	45	TU3247	Retaining Ring
	TU5873	Motor Sheave 50 Cy.	46	TU3273	Retaining Ring
15	TU6484	Cable Strap	47	F116	S.N. Plate
16	TU5850	Motor Mount Weldment	48	TU5732	Mech. Box Cover (Used Only W/ Steam Heated Dryer)
17	TU2474	Top & Bottom Gasket	49	TU2372	Snap Bushing
18	TU2473	Side Gasket	50	TU5682	Blanking Plate
19	TU2476	Felt Seal	51	TU1984	Relay 110V 50 or 60 Cy. (2 Pole)
20	TU4684	Key		TU1985	Relay 220V 50 or 60 Cy. (2 Pole)
21	TU3879	Fan 60 Cy.		TU3495	Relay 115V 50 or 60 Cy. (3 Pole)
	TU5253	Fan 50 Cy.		TU3496	Relay 208 or 230V 50 or 60 Cy. (3 Pole)
22	TU5079	Rear Guard Ass'y.	52	TU7018	Bearing Housing
23	TU7016	15" Basket Sheave	53	TU7019	Bearing & Collar Ass'y.
24	TU5887	Key	54	TU7162	Basket Bearing Bracket
25	TU7021	V-Belt (4L570)	55	TU3246	3/8"-16 x 1" Hex Hd. Unit (4 Req'd)
26	TU4794	V-Belt (4L590)	56	TU7184	Bronze Bushing (2 Req'd)
27	TU5217	14" Idler Sheave			
28	TU5213	Idler Bracket			
29	M263	#8 x 3/8" Sheet Metal Screw			
30	TU4937	3/8"-16 Jam Nut			
31	TU3211	3/8"-16 x 2 1/2" Leveling Bolts			

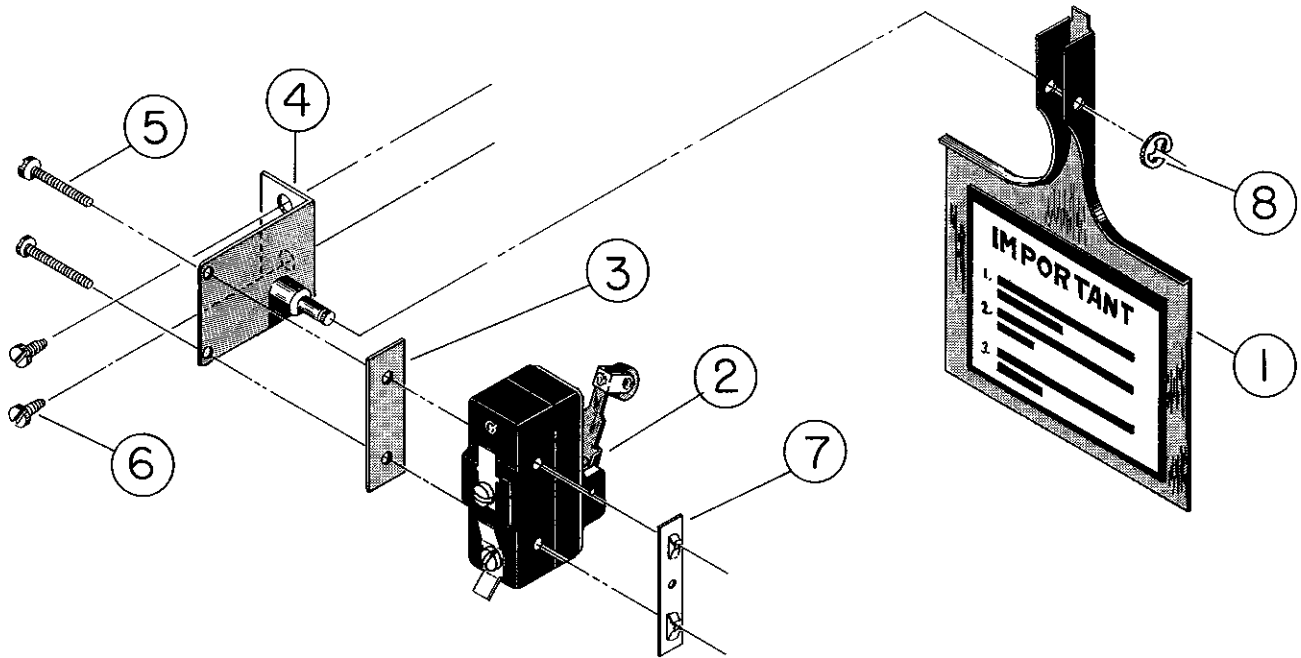
W. M. CISSELL MANUFACTURING COMPANY

831 S. FIRST STREET • P. O. BOX 1143, LOUISVILLE, KY., U.S.A. 40201

Foreign Distributors: Address Correspondence Attention
Export Department • Cable Code "CISSELL"
Pacific Coast Office, 4823 W. Jefferson Blvd., Los Angeles

Ask Your Distributor

CISSELL
28B30 36B30 LAUNDRY DRYER
AIR SWITCH ASS'Y
TU2423



<u>Ref. No.</u>	<u>Part No.</u>	<u>Description</u>
1	TU2463	Actuator Arm
2	TU1981	Air Switch
3	TU1770	Insulator
4	TU2462	Air Switch Bracket
5	TU3219	#6 x 1" S.M.S.
6	M263	#8 x 3/8" S.M.S.
7	TU1771	#6 Tinnerman Twin Nut
8	F888	"E" Ring

For Adjustment of Air Switch See Page 11

W. M. CISSELL MANUFACTURING COMPANY

831 S. FIRST STREET • P. O. BOX 1143, LOUISVILLE, KY., U.S.A. 40201

Foreign Distributors: Address Correspondence Attention
Export Department • Cable Code "CISSELL"
Pacific Coast Office, 4823 W. Jefferson Blvd., Los Angeles

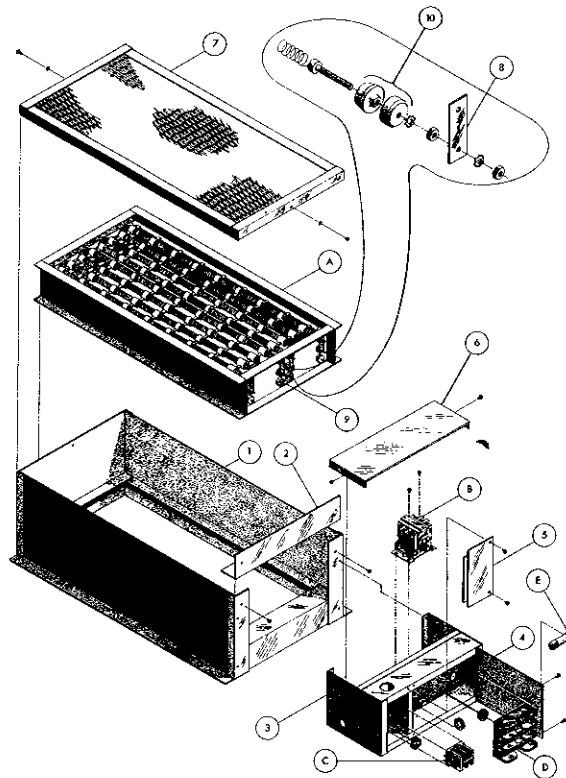
Ask Your Distributor

CISSELL

28B30 & 36B30

LAUNDRY DRYER

ELECTRIC HEATING UNIT



- (1) TU3103 Electric Furnace Housing
 - (2) TU3102 Hold Down Plate
 - (3) TU7138 Electric Box Welded Ass'y.
 - (4) TU7149 Fuse Section Door Welded Ass'y.
 - (5) TU7145 Terminal Section Cover Welded Ass'y.
 - (6) TU7148 Top Cover
 - (7) TU3104 Air Inlet Cover
 - (8) TU3767 Contact Strap (4-Req'd)
 - (9) TU3768 Contact Strap (1-Req'd)
 - (10) TU3253 Insulators (Pkg of 6)
- A-E _____ See Separate Sheet.

SEE SEPARATE SHEET FOR PICTURE

- A. TU6780 3 Bank Heating Unit 21 KW 240-480V
- TU6968 3 Bank Heating Unit 21 KW 208-415V
- TU6971 3 Bank Heating Unit 30 KW 208-415V 36B30's Only
- TU6946 3 Bank Heating Unit 30 KW 240V 36B30's Only
- TU6973 3 Bank Heating Unit 30 KW 550V 36B30's Only

- B. TU7240 Relay 208-240V With 120V Coil
- TU7004 Relay 208-240V With 120V Coil
- TU3496 Relay 415-480V With 120V Coil
- TU6781 Relay 208-240V With 240V Coil
- TU3495 Relay 415-480V With 240V Coil
- TU7063 Relay 208-240V With 240V Coil

- C. TU5881 Terminal Block (1 Phase)
- TU6327 Terminal Block (3 Phase)

- D. TU7075 Fuse Holder 208-240V (Triple Pole)
- TU7076 Fuse Holder 415-480V (Single Pole)
- TU7256 Fuse Holder 250V or less (Triple Pole)
- TU7257 Fuse Holder 600V or less (Triple Pole)

- E. TU7223 Fuse 35 AMP 250V or less Non
- TU7224 Fuse 40 AMP 250V or less Non
- TU7073 Fuse 50 AMP 250V or less Non
- TU7074 Fuse 60 AMP 250V or less Non
- TU7071 Fuse 35 AMP 250-600V Nos
- TU7072 Fuse 50 AMP 250-600V Nos

Rated	Input	Amperage	Minimum Size Supply Wire Based on 90°C Insulated Copper Conductor AWG/MCM
21KW	@ 240 - 1 Phase	88 AMPS	2
21KW	@ 208 - 1 Phase	101 AMPS	2
21KW	@ 240 - 3 Phase	51 AMPS	6
21KW	@ 208 - 3 Phase	58 AMPS	6
21KW	@ 415 - 3 Phase	29 AMPS	8
21KW	@ 480 - 3 Phase	25 AMPS	10
30KW	@ 240 - 3 Phase	72 AMPS	4
30KW	@ 208 - 3 Phase	83 AMPS	2
30KW	@ 415 - 3 Phase	42 AMPS	6
30KW	@ 480 - 3 Phase	36 AMPS	8

Maximum wire size which terminal will accept 240 Volt - #1/0 AWG, 480 Volt - #1/0 AWG.

Dryer is to be connected to two separate circuits - one for the heaters and one for the motor and controls. See nameplate for rated voltage. Circuits are to be fused to agree with local electrical codes.

W. M. CISSELL MANUFACTURING COMPANY

831 S. FIRST STREET • P. O. BOX 1143, LOUISVILLE, KY., U.S.A. 40201

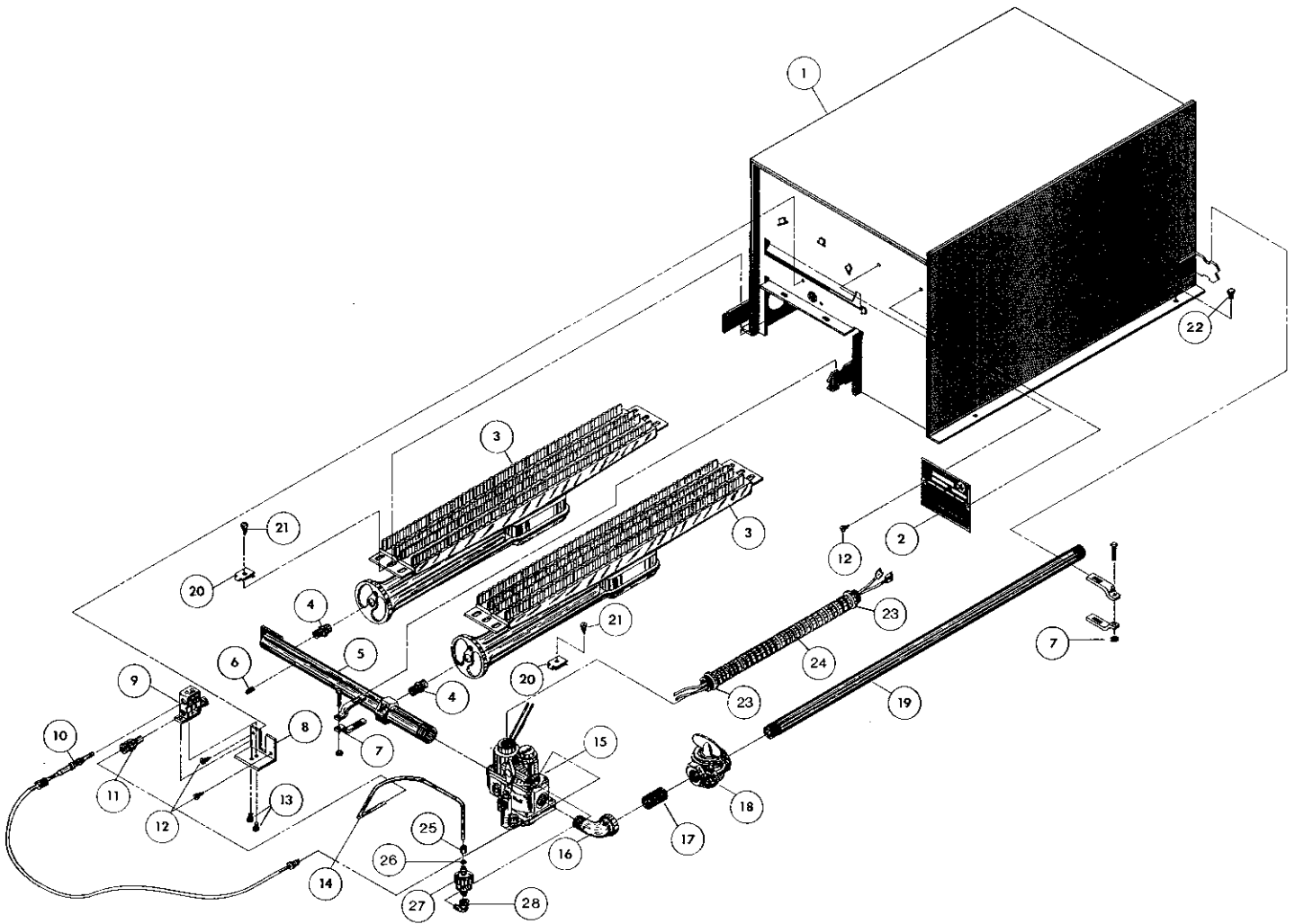
Foreign Distributors: Address Correspondence Attention
Export Department • Cable Code "CISSELL"
Pacific Coast Office, 4823 W. Jefferson Blvd., Los Angeles

Ask Your Distributor

CISSELL

28B30 36B30

**LAUNDRY DRYER
GAS FIRED BONNET**



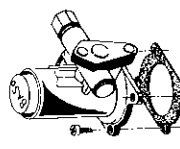
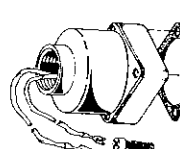
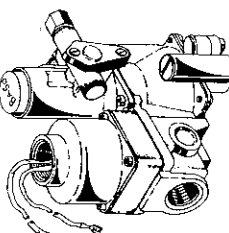

ALL HARDWARE SOLD ONLY IN PACKAGES OF 6

TU2227 GAS-FIRED HEATING UNIT

<u>Ref. No.</u>	<u>Part No.</u>	<u>Description</u>	<u>Ref. No.</u>	<u>Part No.</u>	<u>Description</u>
1	TU6483	Gas Fired Heating Unit	15		See Basotrol Valve Sheet
2	TU2393	Name Plate	16	OP291	1/2" Street Elbow
3	TU1802	Burner (All Gases)	17	TU2714	1/2" Close Nipple
4	TU2169	Gas Orifice (Specify Size)	18	TU6321	Valve 1/2" x 1/2" Gas Cock
5	TU6322	Gas Manifold, Natural, Mixed, Propane, & Butane	19	TU2724	1/2" x 25" Pipe
6	TU2224	1/8" Plug For Gas Manifold Test Hole	20	LB74	#14 Tinnerman Nut
7	TU2226	2 Piece Mounting Brackets	21	TU3209	#14 x 5/8 S. M. S.
8	TU3799	Pilot Support Bracket	22	CB36	1/4"-20 x 1/2" Hex Hd Screw
9	TU3800	Pilot Burner (G-21)	23	F875	Straight Connector
10	TU157	Thermocouple Lead 18" (87D-18)	24	TU2425	3/8" Greenfield Cable W/ Connectors (12" Long)
11	TU145	Pilot Orifice (Specify Size)	25	SU65	1/4" Compression Nut
12	TU3218	8-32 x 7/16 S. M. S.	26	PU8	1/4" Compression Bead
13	TU4915	10-32 x 3/16 Rd. Hd. Machine Screw	27	TU7337	Gum Filter
14	TU6377	Gas Line 17 1/2"	28	FG142	90° Street Elbow

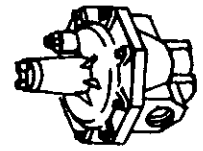
BASOTROL GAS VALVES FOR
ALL CISSELL GAS FIRED DRYERS

1-6372

		COMPLETE BASOTROL VALVE				REPLACEMENT ELECTRIC OPERATOR			REPLACEMENT POWER UNIT	
	CISSELL PART NO.	BASOTROL PART NO.	TYPE GAS	VOLTAGE	CISSELL NUMBER	BASOTROL NUMBER	CISSELL NUMBER	BASOTROL NUMBER		
PETITE DRYERS	TU3701	G92YAA-1	LIQUID PETROLEUM	120V	TU3705	R54889-122A	TU3707	R54319-38		
	TU3702	G92YBA-1	LIQUID PETROLEUM	240V	TU3711	R54889-122B	TU3707	"		
	TU3703	G93YAA-1	NATURAL, MIXED	120V	TU3705	R54889-122A	TU3707	"		
	TU3704	G93YBA-1	NATURAL, MIXED	240V	TU3711	R54889-122B	TU3707	"		
OTHER DRYERS	TU3818	G93AAA-8	NATURAL, MIXED	120V	TU3832	R54889-144A	TU3838	R54319-59		
	TU3819	G93ABA-6	NATURAL, MIXED	240V	TU3833	R54889-143A	TU3838	"		
	TU3821	G92GAA-6	MANUFACTURED	120V	TU3834	R56799-64A	TU3839	R54319-60		
	TU3822	G92GBA-2	MANUFACTURED	240V	TU3835	R56799-63B	TU3839	"		
	TU3817	G92CAA-11	LIQUID PETROLEUM	120V	TU3836	R54889-151A	TU3838	R54319-59		
	TU3820	G92CBA-8	LIQUID PETROLEUM	240V	TU3837	R54889-150B	TU3838	"		

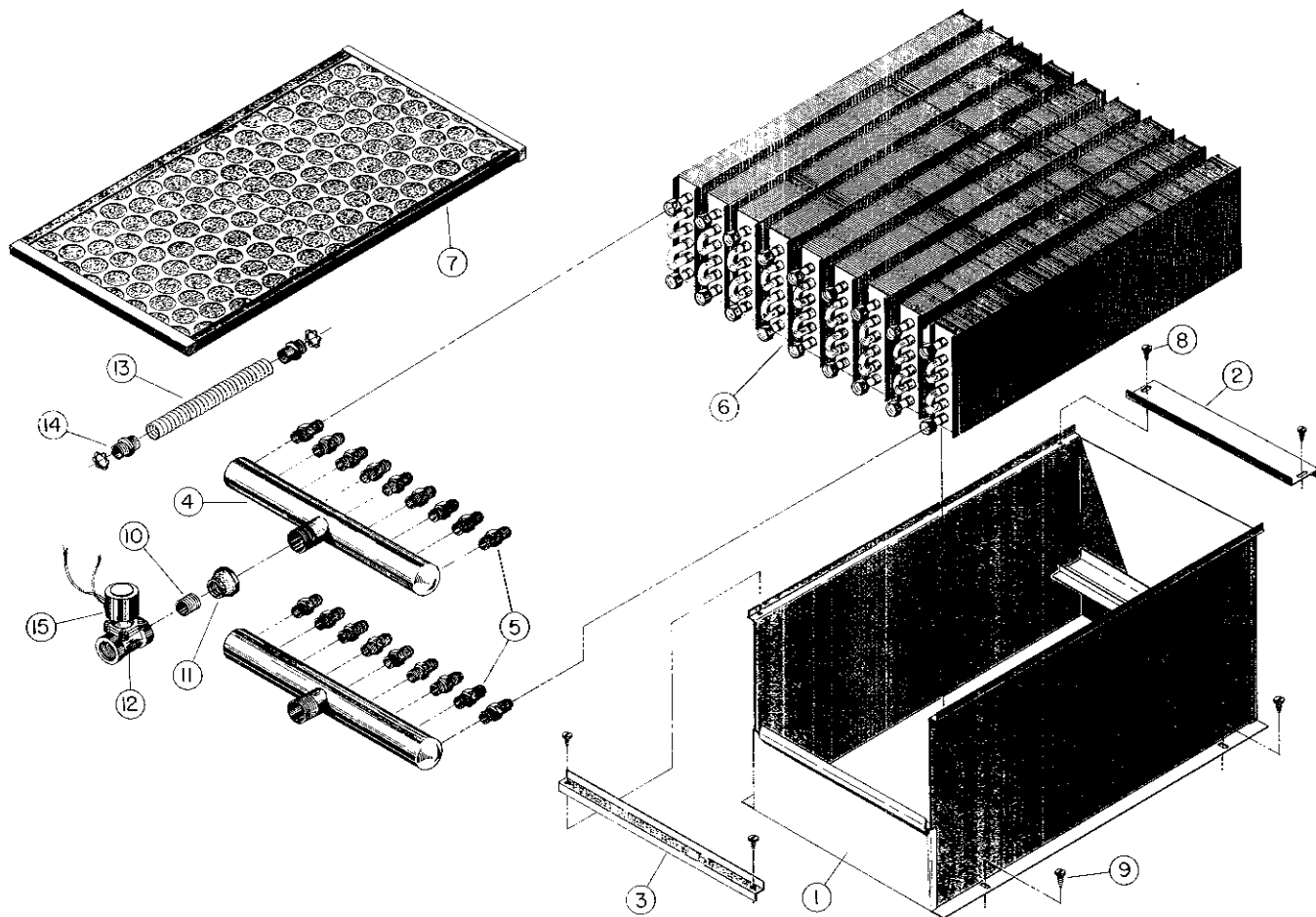
TU2359 THERMAC REGULATOR

(3/4" - T-11-L)



Use with Basotrol Gas Valve for
Manufactured Gases less than
800 BTU per cubic feet.

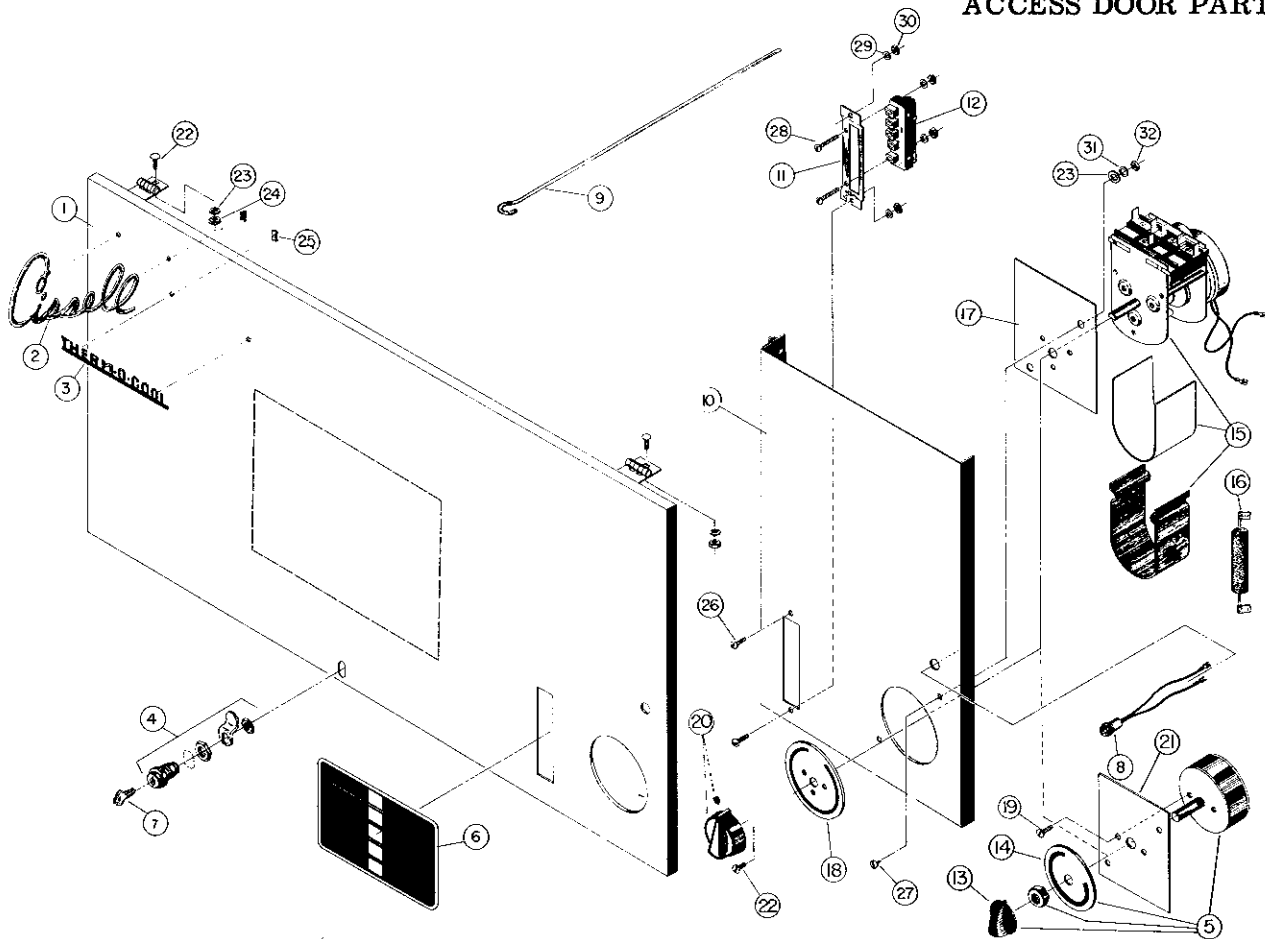
Ask Your Distributor



NINE SECTION STEAM BONNET ASSEMBLY

<u>Ref. No.</u>	<u>Part No.</u>	<u>Description</u>
1.	TU2546	Housing Weldment
2.	TU2547	Front Coil Retainer
3.	TU2548	Rear Coil Retainer
4.	TU2413	Steam Coil Manifold
5.	TU2414	3/4"-16 x 3/8" Straight Connector
6.	TU2405	Steam Coil (9 req'd.) 7 3/4" W x 1 5/8" H x 26" Lg.
7.	TU2598	Air Filter (Optional) 16" x 25" x 1"
8.	M263	#8 x 3/8" S.M.S.
9.	TU3209	#14 x 5/8" S.M.S.
10.	TU4596	3/4" close Pipe Nipple
11.	TU2735	1" x 3/4" Reducer
12.	TU6041	Solenoid Valve 120V, 50 or 60 cycle
	TU5924	Solenoid Valve 240V, 50 or 60 cycle
13.	50-4641-292	Greenfield Cable, 1/2" (Specify 21" long)
14.	TU4790	1/2" Straight Conn. (2 req'd)
15.	TU5939	240V. coil for TU5924
	TU7151	120V. coil for TU6041

Ask Your Distributor



ALL HARDWARE SOLD ONLY IN PACKAGES OF 6

Ref. No.	Part No.	Description	Ref. No.	Part No.	Description
1	TU5759	Top Access Panel (For 28B30 W/8 Stage Control)	15	TU4864	60 Min. Haydon Timer
	TU5069	Top Access Panel (28B30 & 28E30)	16	TU2428	120-60-1 Double Switch
	TU5078	Top Access Panel (36B30 & 36E30)	17	TU6019	Resistor (Used On 220-60-1 Timer)
	TU5821	Top Access Panel (36B30 W/8 Stage Control)	18	TU5444	Timer Mounting Plate (60 Cy.)
2	TU2610	Cissell Script	19	TU5444	60 Min. Dial
3	TU3656	Therm-O-Cool Name Plate	20	TU3802	#8-32 x 3/8" Flat Hd. Screw
4	TU4822	Lock #3186	21	TU2555	Knob Complete
5	T102	50 Cy. Timer	22	TU6323	50 Cy. Timer Mtg. Plate
6	TU6619	Push Button Control Plate	23	TU3479	#10-32 x 7/16" Truss Hd
7	TU2844	Key JWC2	24	P104	1/4" Cut Washer
8	TU5421	Pilot Light 110V	25	TU2842	#10-32 Hex Nut
	TU5639	Pilot Light 220V	26	TU3137	Push On Speed Nut
9	TU2801	Support Rod	27	TU3624	#6-32 x 1/4" Round Head Screw
10	TU6018	Single Timer Mtg. Plate	28	TU7241	#8 x 1/4" S. M. S.
11	TU5153	Push Button Plate	29	SV136	#6-32 x 15/16" Round Head Screw
12	TU5106	Push Button Switch	30	M270	#6 Internal Tooth Lock Washer
13	T148	Knob	31	TU3400	#6-32 Hex Nut
14	TU5000	Dial Face (For 50 Cy. Timer)	32	FB187	#10 Lock Washer
				TU3266	#8-32 Hex Nut

W. M. CISSELL MANUFACTURING COMPANY

831 S. FIRST STREET • P. O. BOX 1143, LOUISVILLE, KY., U.S.A. 40201

Foreign Distributors: Address Correspondence Attention
Export Department • Cable Code "CISSELL"
Pacific Coast Office, 4823 W. Jefferson Blvd., Los Angeles

Ask Your Distributor

28B30

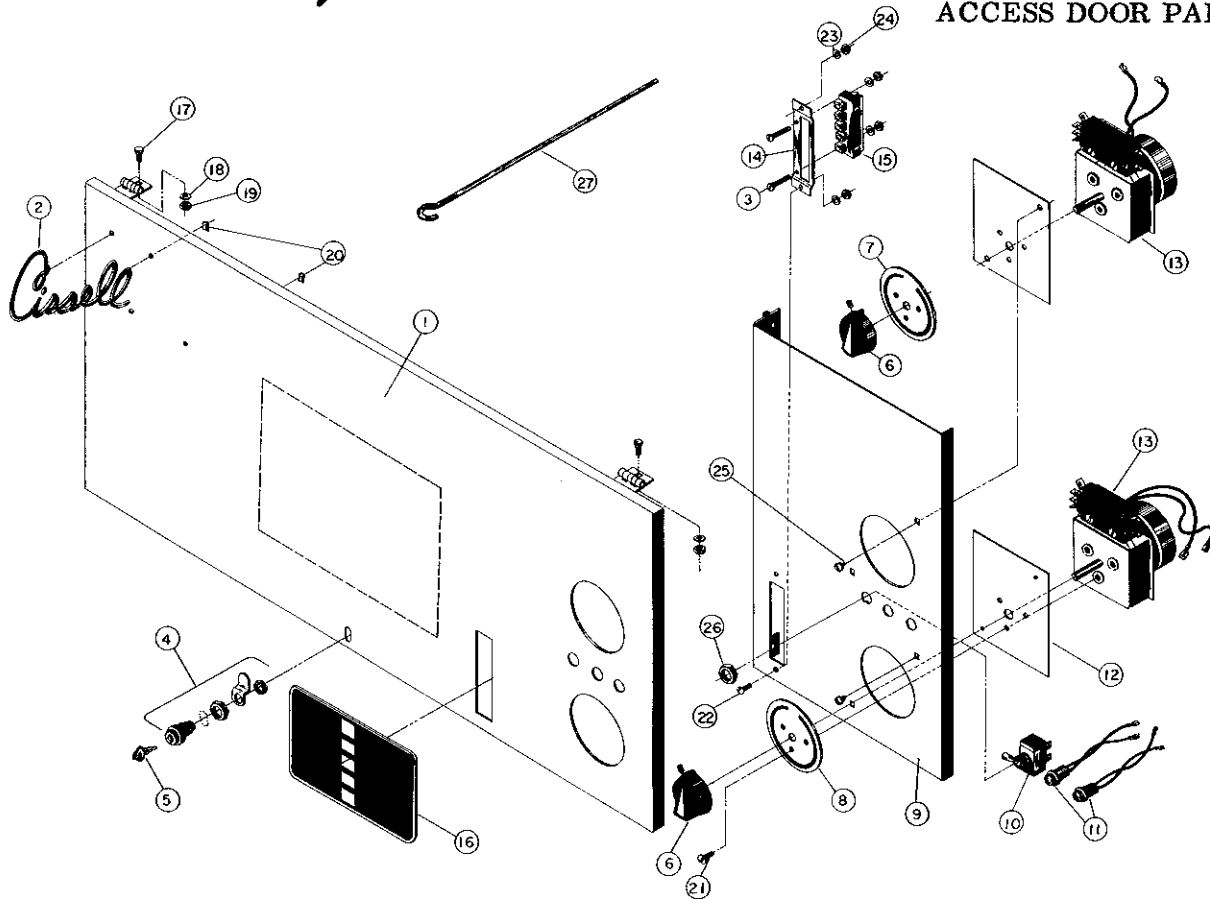
36B30

28E30

36E30

DOUBLE TIMER CONTROL PANEL

**AND
ACCESS DOOR PARTS**



ALL HARDWARE SOLD ONLY IN PACKAGES OF 6

<u>Ref. No.</u>	<u>Part No.</u>	<u>Description</u>	<u>Ref. No.</u>	<u>Part No.</u>	<u>Description</u>
1	TU5753	Top Access Panel (28B30 & 28E30)	13	TU6110	Timer 0-15 120/60 Cy.
	TU5819	Top Access Panel (36B30 & 36E30)		TU6109	Timer 0-60 120/60 Cy.
	TU6314	Top Access Panel W/8 Stage Steam (36B30 Only)		TU5843	Timer 0-15 220/60 Cy.
2	TU2610	Cissell Script		TU5842	Timer 0-60 220/60 Cy.
3	SV136	#6-32 x 15/16" Rd Head Screw	14	TU6082	Timer 0-15 220/50 Cy.
4	TU4822	Lock #3186	15	TU6083	Timer 0-60 220/50 Cy.
5	TU2844	Key JWC2	16	TU5153	Push Button Plate
6	TU2555	Knob Assy.	17	TU5106	Push Button Switch
7	TU5445	Dial 0-15	18	TU6619	Push Button Control Plate
8	TU5444	Dial 0-60	19	TU3479	#10-32 x 7/16" Truss Head Screw
9	TU6016	Double Control Panel Weldment	20	P104	1/4" Cut Washer
10	FG147	Toggle Switch	21	TU2842	#10-32 Hex Nut
11	TU5421	Pilot Light 110V	22	TU3137	Push On Speed Nut
	TU5639	Pilot Light 220V	23	LB68	#8-32 x 3/8" Flat Head Screw
12	TU6019	Timer Adapter Plate	24	TU3624	#6-32 x 1/4" Rd Head Screw
			25	M270	#6 Internal Tooth Lock Washer
			26	TU3400	#6-32 Hex Nut
			27	TU7241	#8 x 1/4" S. M. S.
				TU3805	15/32" Locking Hex Nut
				TU2801	Support Rod

W. M. CISSELL MANUFACTURING COMPANY

831 S. FIRST STREET • P. O. BOX 1143, LOUISVILLE, KY., U.S.A. 40201

Foreign Distributors: Address Correspondence Attention
Export Department • Cable Code "CISSELL"
Pacific Coast Office, 4823 W. Jefferson Blvd., Los Angeles

Ask Your Distributor

28B30

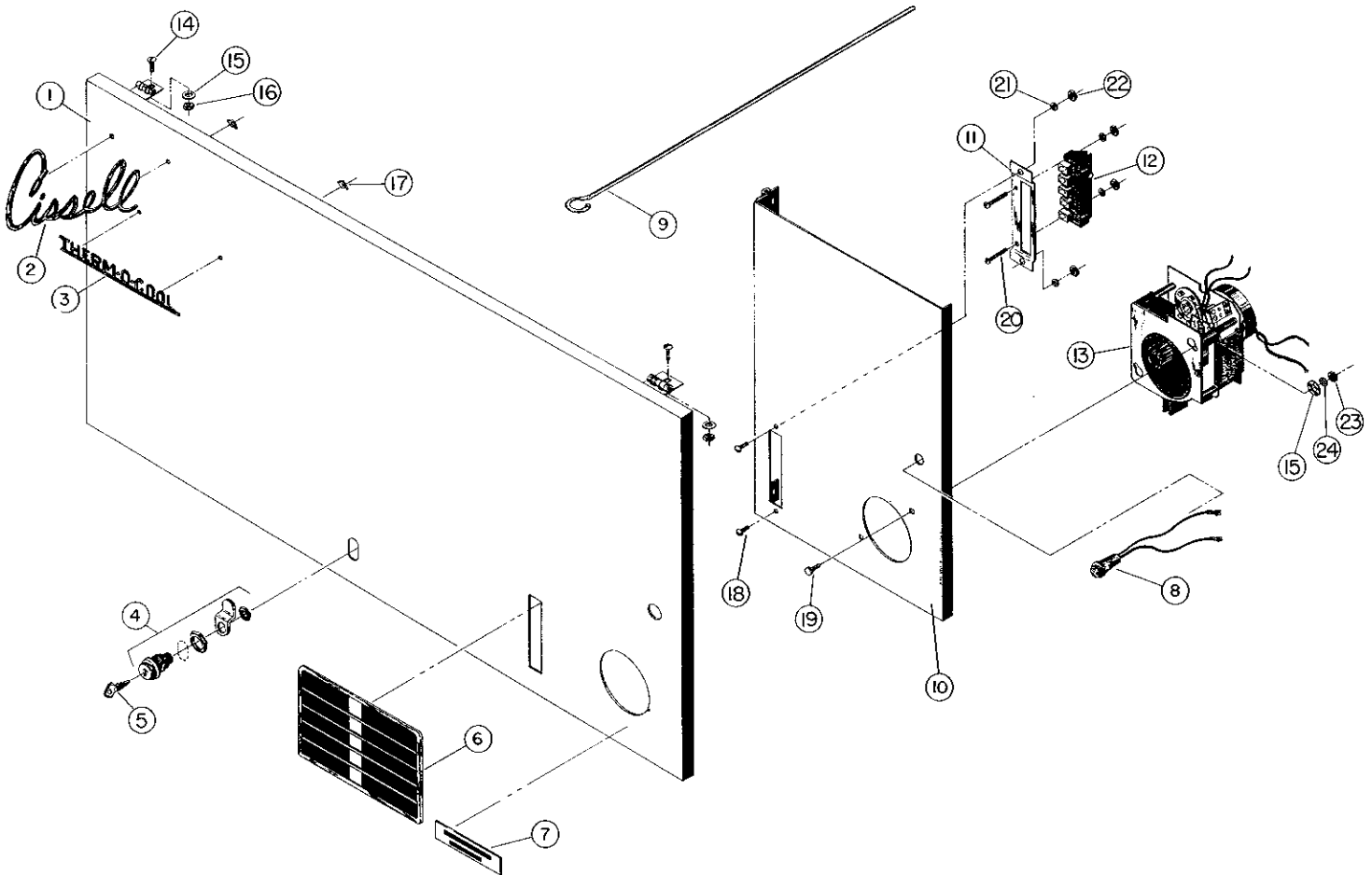
28E30

36B30

36E30

SINGLE COIN METER CONTROL PANEL

**AND
ACCESS DOOR PARTS**



ALL HARDWARE SOLD ONLY IN PACKAGES OF 6

Ref. No.	Part No.	Description	Ref. No.	Part No.	Description
1	TU5069	Access Door (28B30 & 28E30)	13		Coin Meter (Specify Voltage & Coin Denomination)
	TU5078	Access Door (36B30 & 36E30)	14	TU3479	#10-32 x 7/16" Truss Head Scr.
2	TU2610	Cissell Script	15	P104	1/4" Cut Washer
3	TU3656	Therm-o-cool Name Plate	16	TU2842	#10-32 Hex Nut
4	TU4822	Lock Knob #3186	17	TU3137	Push-On Speed Nut
5	TU2844	Key JWC2	18	TU3624	#6-32 x 1/4" Machine Screw
6	TU6619	Push Button Control Plate	19	TU4958	#8-32 x 3/8" Machine Screw
7	TU2683	Add Coin (Name Plate)	20	SV136	#6-32 x 15/16" Rd Head Screw
8	TU5421	Pilot Light 110V	21	M270	#6 Internal Tooth Lock Washer
	TU5639	Pilot Light 220V	22	TU3400	#6-32 Hex Nut
9	TU2801	Support Rod	23	TU3266	#8-32 Hex Nut
10	TU6018	Single Coin Meter Mtg. Plate	24	FB187	#10 Lock Washer
11	TU5153	Push Button Plate			
12	TU5106	Push Button Switch			

W. M. CISSELL MANUFACTURING COMPANY

831 S. FIRST STREET • P. O. BOX 1143, LOUISVILLE, KY., U.S.A. 40201

Foreign Distributors: Address Correspondence Attention
Export Department • Cable Code "CISSELL"
Pacific Coast Office, 4823 W. Jefferson Blvd., Los Angeles

Ask Your Distributor

28B30

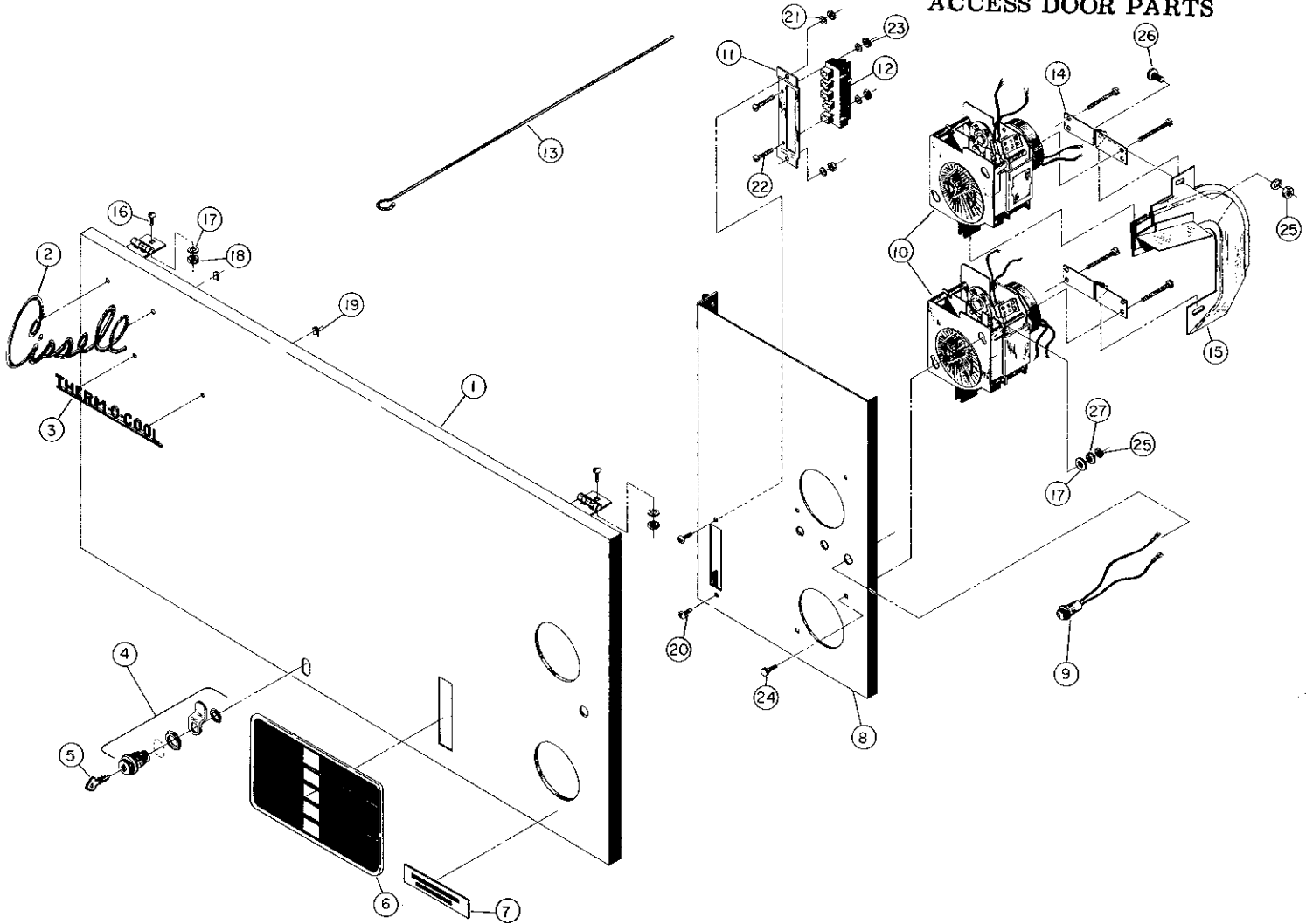
28E30

36B30

36E30

DOUBLE COIN METER CONTROL PANEL

**AND
ACCESS DOOR PARTS**



ALL HARDWARE SOLD ONLY IN PACKAGES OF 6

Ref. No.	Part No.	Description	Ref. No.	Part No.	Description
1	TU5752	Top Access Panel (28B30 & 28E30)	13	TU2801	Support Rod
	TU6093	Top Access Panel (36B30)	14	TU5286	Coin Chute Mtg. Bracket
2	TU2610	Cissell Script	15	TU5125	Coin Meter Chute
3	TU3656	Therm-o-cool Name Plate	16	TU3479	#10-32 x 7/16" Truss Head Screw
4	TU4822	Lock #3186	17	P104	1/4" Cut Washer
5	TU2844	Key JWC2	18	TU2842	#10-32 Hex Nut
6	TU6619	Push Button Control Plate	19	TU3137	Push-In Speed Nut
7	TU2683	Add Coin (Name Plate)	20	TU3624	#6-32 x 1/4" Rd Head Screw
8	TU6016	Double Control Panel Weldment	21	M270	#6 Internal Tooth Lockwasher
9	TU5421	Pilot Light 110V	22	SV136	#6-32 x 15/16" Rd Head Screw
	TU5639	Pilot Light 220V	23	TU3400	#6-32 Hex Nut
10		Coin Meter (Specify Voltage & Coin Denomination)	24	TU4958	#8-32 x 3/8" Machine Screw
11	TU5153	Push Button Plate	25	TU3266	#8-32 Brass Nut
12	TU5106	Push Button Switch	26	M262	#8-32 x 3/8" Truss Head Screw
			27	FB187	#10 Split Lockwasher